

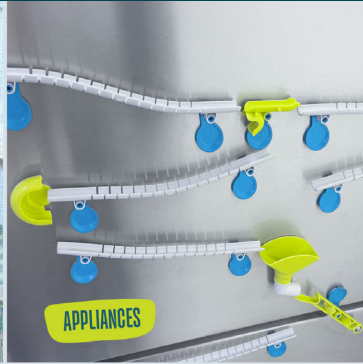
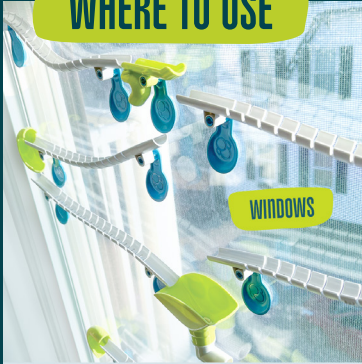
# GECKO RUN

## QUICK-START GUIDE

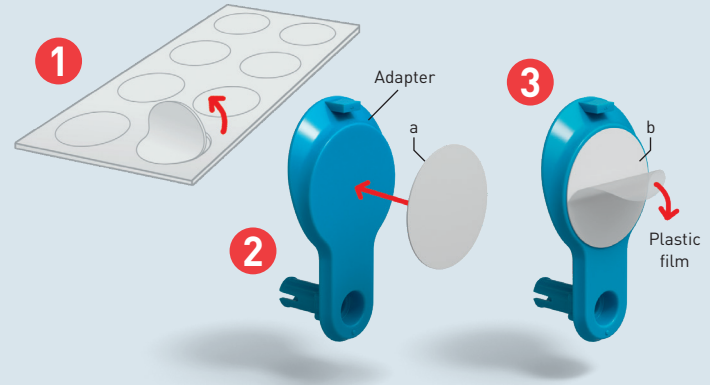
SCAN FOR A  
QUICK-START  
VIDEO:



### WHERE TO USE



### HOW TO ATTACH THE NANO-ADHESIVE PADS

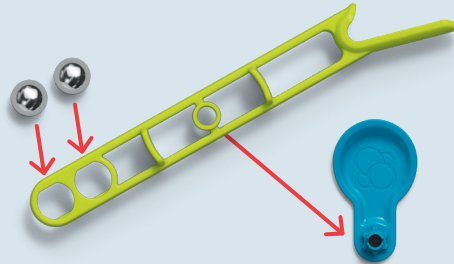
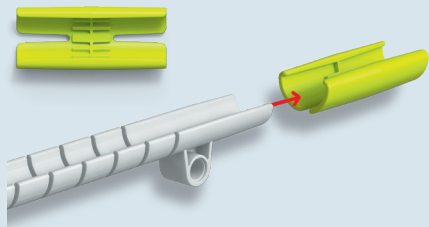
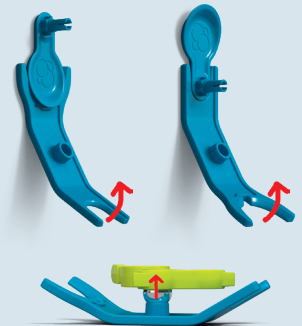
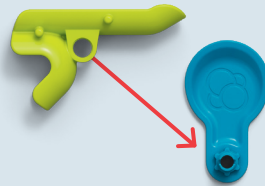
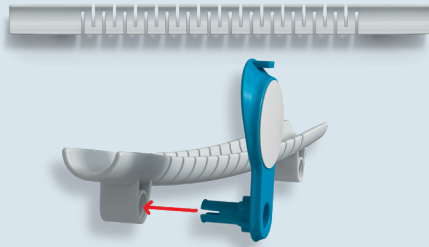
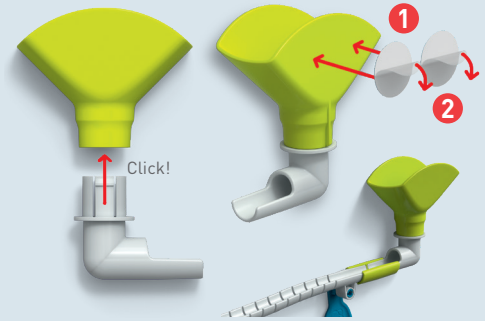
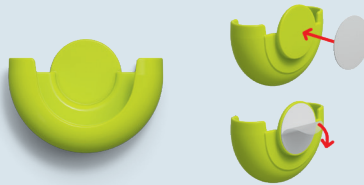
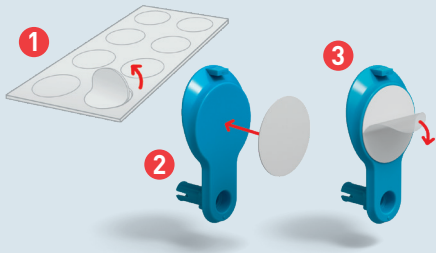


The pads have two different sides: a **sticky side with permanent glue (a)** and a **repositionable nano-adhesive side (b)**. To prepare the adapters (as well as some of the trick components) for use, you must first stick pads onto them.

1. Peel a pad off of the sheet.
2. Stick the permanent sticky side (a) onto the back of the adapter.
3. Remove the thin plastic film to reveal the nano-adhesive side (b).

# VISUAL GUIDE TO GETTING STARTED WITH THE COMPONENTS

See the manual for more details on the components and tips for setting up your first runs.



For setting up other trick components, see the manual that came with your starter set or expansion pack.